

Connections to THINKING

Read the spelling words and sentences.

- | | | |
|-------------------|----------------------|---|
| 1. bookkeeping | <i>bookkeeping</i> | Who does the company's bookkeeping ? |
| 2. appropriate | <i>appropriate</i> | Wear appropriate shoes with your suit. |
| 3. acceptance | <i>acceptance</i> | Everyone liked Ira's acceptance speech. |
| 4. disappearance | <i>disappearance</i> | The cat's disappearance was temporary. |
| 5. essential | <i>essential</i> | Protein is essential to a good diet. |
| 6. accuracy | <i>accuracy</i> | Check your answers for accuracy . |
| 7. assistance | <i>assistance</i> | Thanks for your offer of assistance . |
| 8. accelerate | <i>accelerate</i> | The rocket began to accelerate . |
| 9. recommend | <i>recommend</i> | I can recommend someone for that job. |
| 10. occasional | <i>occasional</i> | I enjoy an occasional slice of pizza. |
| 11. occasionally | <i>occasionally</i> | Teachers occasionally show films. |
| 12. dilemma | <i>dilemma</i> | How would you solve such a dilemma ? |
| 13. withholding | <i>withholding</i> | Is anyone withholding information? |
| 14. accommodate | <i>accommodate</i> | This boat can accommodate six people. |
| 15. vaccinate | <i>vaccinate</i> | A veterinarian will vaccinate our dog. |
| 16. necessity | <i>necessity</i> | A computer is a necessity in this class. |
| 17. successor | <i>successor</i> | Who will be my successor next year? |
| 18. disapprove | <i>disapprove</i> | My parents disapprove of that movie. |
| 19. accumulate | <i>accumulate</i> | How did I accumulate so many pens? |
| 20. questionnaire | <i>questionnaire</i> | Fill in the questionnaire anonymously. |

Think & Sort the spelling words.

- 1–6. Write the words in which the double consonants make two sounds (as in **accept**). Circle the double consonants.
- 7–18. Write the words that have one set of double consonants. Circle the double consonants.
- 19–20. Write the words that have two sets of double consonants. Circle the double consonants.

Remember

A single consonant sound may be spelled with a double consonant; that is, the same two consonant letters together.

Spelling Tutor



Double consonants make two sounds

1.

2.

3.

4.

5.

6.

One set of double consonants

7.

8.

9.

10.

11.

12.

13.

14.

15.

16.

17.

18.

Two sets of double consonants

19.

20.

Word Meanings

Write the spelling word that matches each definition.

1. the act of vanishing
2. infrequent
3. infrequently
4. to praise another as being worthy
5. the practice of recording a business's accounts
6. a printed form containing a set of questions
7. a requirement

Word Structure

When a prefix has been absorbed into a word root or a base word, a double consonant can result. For example, the word **accumulate** comes from the Latin prefix **ad-**, meaning "to," and the Latin noun **cumulus**, meaning "heap." Since **adc-** is hard to pronounce, the **d** was changed to **c** to make pronunciation easier.

- 8–12. Write the spelling words in which the prefix **ad-** was absorbed into the word and changed to **ac-**.
13. Write the spelling word in which the prefix **ad-** was absorbed into the word and changed to **ap-**.
14. Write the spelling word in which the prefix **ad-** was absorbed into the word and changed to **as-**.

Use the Dictionary

To determine whether a double consonant makes one or two sounds, check the phonetic spelling of the word in the **Spelling Dictionary**. For example, the phonetic spelling of **accept** /ăk sĕpt'/ tells you that the first **c** is pronounced as /k/ and the second **c** as /s/. Write the spelling words that correspond to the following phonetic spellings. Circle the double consonants that make two sounds.

- | | |
|----------------------|--------------------|
| 15. /dĭs' ə prōōv'/ | 18. /sək sĕs' ər/ |
| 16. /dĭ lĕm' ə/ | 19. /ĭ sĕn' shəl/ |
| 17. /wĭth hōld' ĭng/ | 20. /văk' sə nāt'/ |

Word Meanings

1.

2.

3.

4.

5.

6.

7.

Word Structure

8.

9.

10.

11.

12.

13.

14.

Use the Dictionary

15.

16.

17.

18.

19.

20.

Connections to READING

bookkeeping	appropriate	acceptance	disappearance	essential
accuracy	assistance	accelerate	recommend	occasional
occasionally	dilemma	withholding	accommodate	vaccinate
necessity	successor	disapprove	questionnaire	accumulate

Replace the Words

1.

2.

3.

4.

5.

6.

7.

8.

9.

10.

11.

Complete the Analogies

12.

13.

14.

15.

16.

17.

18.

19.

20.

Replace the Words

Write a spelling word that is a synonym for each underlined word or phrase.

- Doctors inoculate children against diphtheria and typhoid.
- They also urge that children get a booster shot after a few years.
- We all would like to see a vanishing of childhood disease.
- However, epidemics still occur from time to time.
- Vaccination is often a requirement for tourists.
- Before taking a physical exam, patients usually complete a form that asks about their previous medical history.
- It is important that the questions be answered with truth.
- It is crucial for the doctor to know the patient's medical history.
- Doctors sometimes face a problem in deciding between two similar medications.
- Social agencies can provide services for people who require medical help.
- Medical record-keeping and recording finances systems are crucial.

Complete the Analogies

Write a spelling word to complete each analogy.

- Comply** is to **compliance** as **assist** is to ____.
- Precede** is to **follow** as **predecessor** is to ____.
- Unsuitable** is to **suitable** as **inappropriate** is to ____.
- Often** is to **seldom** as **frequent** is to ____.
- Fall** is to **rise** as **slow down** is to ____.
- Agree** is to **disagree** as **approve** is to ____.
- Reject** is to **rejection** as **accept** is to ____.
- Find** is to **discover** as **collect** is to ____.
- Generosity** is to **sharing** as **stinginess** is to ____.

Proofread a Paragraph

Proofread the paragraph below for ten misspelled words. Then rewrite the paragraph. Write the spelling words correctly and make the corrections indicated by the proofreading marks.

Proofreading Marks

≡	Make Uppercase
/	Make Lowercase
^	Add
~	Delete
⊙	Add a Period
⌞	Indent

⌞ You probably know about Louis Pasteur because of
 Pasteurization, the process he invented to make milk safe to
 drink. However, this french chemist also developed vaccines,
 including the one for Rabies. By 1884, he had developed a way
 to vaxcinate dogs against rabies. In 1885, a nine-year-old boy
 named Joseph was bitten by a rabid dog and was brought to
 Pasteur for asistance. Pasteur was in a dilemma. He had not had
 time to acumulate the data he needed about using the vaccine
 on humans, but help for Joseph was essential. Giving the
 vaccine would be risky, but withholding it would not be
 aproppriate either. The necesity for treatment won out, and
 Joseph lived. The disapearance of rabies as a dreaded disease
 had begun, and Pasteur's vaccine began to gain acceptance.

Informative/Explanatory Writing

Write a Paragraph

Write a paragraph about someone you know who has contributed to the well-being of others in either a small or a large way.

- Do research to learn more about the person. Focus on one or two accomplishments in the person's life.
- Use as many spelling words as you can.
- Proofread your paper for errors in spelling, grammar, capitalization, and punctuation.
- Use a print or online dictionary to check spelling if you are not sure.

Transfer

Think of four more words with double consonants. Write the words in your Spelling Journal. Circle the double consonants.

Extend & Transfer

Word Study

Meaning Mastery

1.

2.

3.

4.

5.

6.

7.

Word Building

8.

9.

10.

11.

12.

13.

14.

15.

Word Categorization

16.

17.

18.

19.

20.

assess	exaggerate	professional	affection
terrible	essential	bookkeeping	appropriate
accuracy	assistance	recommend	occasional
dilemma	occasionally	accommodate	acceptance
accelerate	withholding	disappearance	vaccinate
necessity	successor	disapprove	accumulate
casserole	dissension	questionnaire	vendetta
allergic	affirmative	appreciative	incessant
appraisal	accentuate	illustrious	succulent

Use words from the list above to complete these exercises.

Meaning Mastery

- 1–2. Write the words that contain the Latin prefix **dis-**, meaning "not" or "the opposite of."
3. Write the word that is an antonym of **disapprove**.
4. Write the word that comes from the Latin word **cumulare**, meaning "to pile up."
5. Write the word that comes from a French word meaning "to ask."
- 6–7. Write the words you associate with frequency.

Word Building

Add or remove a suffix from the words below to write a word from the box.

8. assist	11. profession	14. appraise
9. appreciate	12. accentuation	15. allergy
10. affirm	13. dissent	

Word Categorization

Write the word that goes with each group.

16. precision, correctness, _____
17. quicken, hurry, _____
18. accounting, auditing, _____
19. follower, replacement, _____
20. contain, house, _____

Math

Word Hunt

Read the passage below and notice words with double consonants.

Do you know where your yard ends and your neighbor's yard begins? Have you ever wondered how maps are created? These are questions that a surveyor can answer.

Surveyors are professionals who use a variety of tools and their knowledge of mathematics to measure and draw the earth's surface. They determine the position of points and the distances and angles between them. Accuracy in surveying is essential. Information from surveyors is used in deeds, leases, and other legal documents, as well as in maps.

Establishing boundaries of ownership (for example, where your yard begins and ends) is an important aspect of surveying. A surveyor gathers information through research of legal documents, questionnaires, and careful on-site measurements. Precise boundary information is a necessity when assessing lot size and value during a property appraisal. In other words, knowing exactly where your property line is will help you determine how much your property is worth.

Geodetic surveyors measure large areas. Geophysical prospecting surveyors mark sites below the earth's surface. Most often, these sites are for oil and gas exploration. Marine surveyors study and map bodies of water.

Cartographers create maps. Some specialists in this area use computer programs and aerial photographs to perform their jobs. They occasionally do on-site work, but more often, they work in an office.

If you're interested and proficient in algebra, physics, trigonometry, and mechanical drawing, surveying might be a good occupation for you.

1.

2.

3.

4.

5.

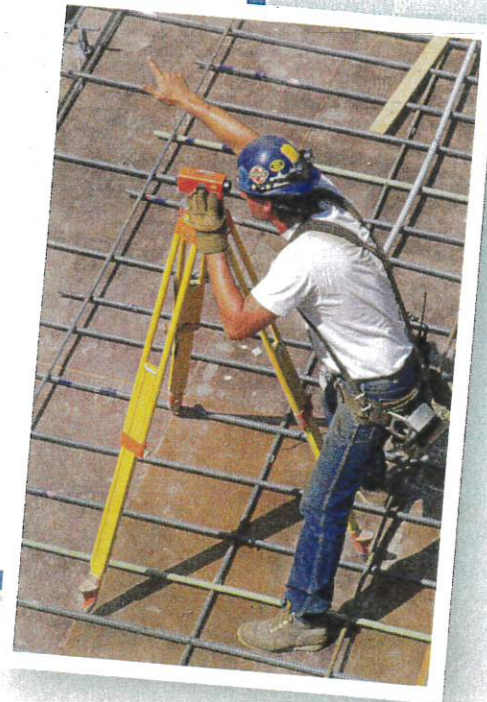
6.

7.

8.

9.

10.

**WORD SORT**

1–10. Find and write the words that contain double consonants. Check a print or online dictionary for the definition of any unfamiliar words.